

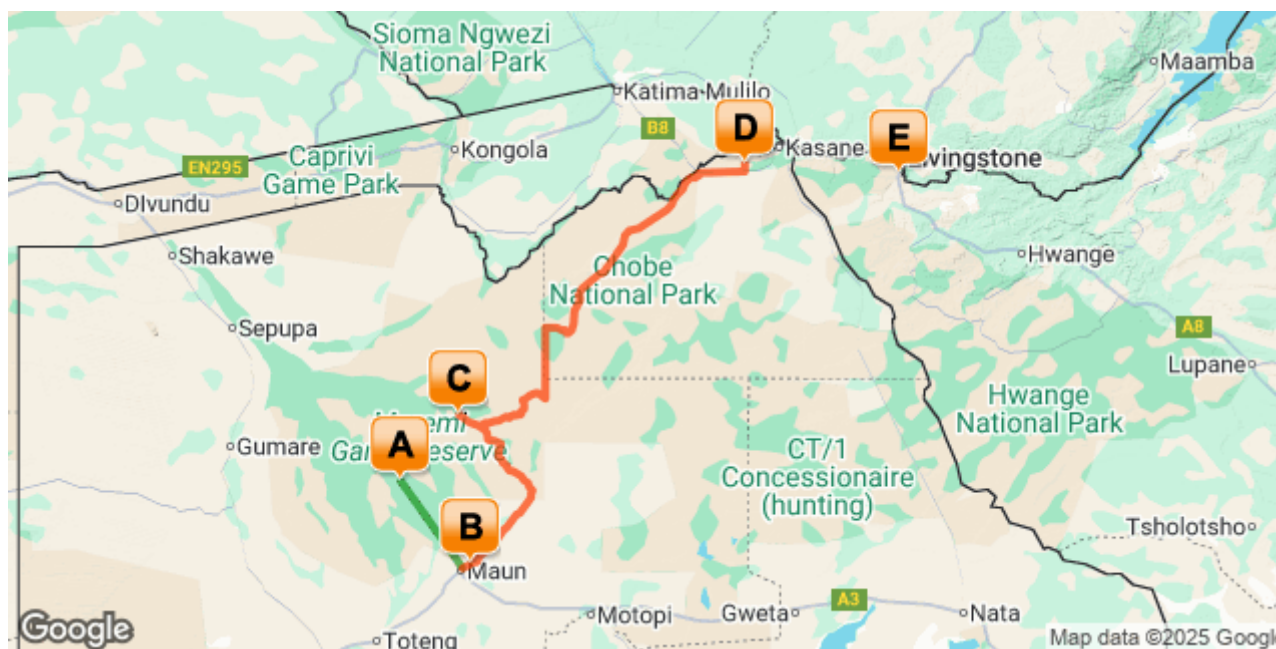


BOTSWANA IS OUR HOME SAFARIS ARE OUR PASSION



10 Nights Buffalo Lodge and Mobile Combo

Okavango Delta - Maun - Moremi Game Reserve - Chobe National Park - Victoria Falls (Zimbabwe)
11 Days / 10 Nights



Introduction

Start	Accommodation	Destination	Basis	Duration
Day 1	<u>Oddballs' Camp</u>	Okavango Delta	FI	2 Nights
Day 3	Sedia Hotel	Maun	B&B	1 Night
Day 4	Bushways Buffalo Mobile Safari Moremi	Moremi Game Reserve	FB+	3 Nights
Day 7	Bushways Buffalo Mobile Safari Chobe	Chobe National Park	FB+	3 Nights
Day 10	Bushways Buffalo Mobile Safari Victoria Falls - Pioneers Lodge or similar	Victoria Falls (Zimbabwe)	B&B	1 Night

Key

FI: Fully Inclusive - Bed, All Meals, Fees and Activities. B&B: Bed and Breakfast.

FB+: Full Board Plus - Dinner, Bed, Breakfast, Lunch and Activities

The mobile section in this itinerary is a Semi Participation Safari which means that you set up the camping tent (with guidance/assistance) and assist with packing/unpacking your luggage, but aside from this the camp chores are done by the camp assistant and guide (cooking/cleaning/firewood etc). It is one of the most easily mobile forms of camping and allows you to visit a range of areas in a limited space of time. This trip travels with a maximum of 12 guests.

Transport

Flight Information

Date	Flight	Details
Day 1	Shared Charter Flight	Maun International Airport [MUB] – Delta Airstrip
Day 3	Shared Charter Flight	Delta Airstrip – Maun International Airport [MUB]

Transfers

Date	Company	Pick Up
Day 3	Shared Vehicle Transfer	Maun International Airport [MUB] – Sedia Hotel
Day 4	Shared Vehicle Transfer	Sedia Hotel – Moremi Game Reserve

10 Nights Buffalo Lodge and Mobile Combo

Departure Dates	Per Person Sharing	Single Supplement
April 2026 - 18 April - 28 April	USD 3,170	USD 305
June 2026 - 13 June - 23 June	USD 3,315	USD 305
July - October 2025 - 03 July - 13 July / 19 July -29 July / 07 August - 17 August / 29 August - 07 September/ 11 September - 21 September/ 27 September - 07 October/ 09 October - 19 October	USD 3,525	USD 620

Special notes

- Please note that the camping section runs with a maximum of 12 people and this safari is built around the mobile sector departure dates which are fixed.
- Guests are required to purchase their own drinks in Maun the day before departure on the mobile safari.
- The single surcharge may be waived for selected departures on the mobile camping safari, resulting in a lower single surcharge, please discuss with your consultant.
- The above rate is subject to change due to major currency fluctuations and fuel surcharges and increases in National Park fees.
- Optional Pre-safari and Post-Safari Extensions on request.
- Minimum age of 12 years to participate in this safari.
- All water-based activities are subject to water levels at time of travel.
- Please note that additional surcharges on transfers may apply for solo travelers, the single supplement covers accommodation only, please apply for a personal quote.
- All rates are subject to availability at the time of booking.

Included



Travel for Impact – Responsible Travel

By booking this itinerary, you donate USD\$2 for every night of travel per person on the booking. Your donation goes to **Travel for Impact (TFI)** and ensures that your safari has a meaningful impact on the people who live locally. For more information on giving back to your chosen destination of travel, visit www.travelforimpact.com



Okavango Air Rescue

Please note that we include a fee into all our packages for a local medivac in case of an emergency. Please discuss further details with your consultant and for more information, visit <http://www.okavangorescue.com/>

Day 1-2

Oddballs' Camp, Okavango Delta

Day Itinerary

On arrival at Maun Airport, you are met by a representative from Safaris Specialists and shown to the charter company to assist with check in for the light aircraft transfer flight to Oddballs Camp where you spend the following two nights on a fully inclusive basis (activities are shared with other guests).

Please note that the flight is booked on a 'seat rate' basis and therefore flight times are not scheduled until the day prior to flying, lodge managers will arrange your activities and transfers accordingly. Please note that there is a strict luggage restriction on all light aircraft flights of 15kg per person in soft bags, plus 5kg hand luggage and there may be up to 3 stops en-route.



The Okavango Delta is where the wild things are: an immense, waterlogged oasis alive with elephants and birdlife, adrift in the middle of Kalahari sands. The real magic of the Delta lies in its water, trickling through from far away highlands, and spreading across the channels and floodplains.

During winter in the Kalahari, when the sun has baked the earth bare and turned the desert its driest, water fills the Okavango; transforming the floodplains into a Noah's Ark of African wildlife.

As the water brings life to the delta, its local residents shape and recreate it. Termites slowly build mounds into islands, germinated with palm trees by passing elephants. Waterways open and close on the whim of wide-bottomed hippos, carving out channels where they crash through reeds, and leaving room behind them for exploration by mokoro.

The Okavango has many faces, which change throughout the year, prompted by that most unpredictable diva of all: the weather. Water levels rise and drop, expanding and shrinking islands, while animals move where the life is easiest and the grass greenest. In a few days, a sandy road driven by vehicle can become a waterway of unknowable depth, prompting a safari by boat instead.

Where and when you stay in the Okavango Delta will hugely influence what you do in the bush each day, the animals you're most likely to see and finally, the safari experience you'll have.

The delta's watery heart is best discovered by mokoro through shallow channels and floodplains, as well as crossing the islands on foot. For less water and more of the big game, visit a camp on its drier edges (including Moremi Game Reserve and the Khwai Community Area), jump on a vehicle and seek out the animals hiding in the woodlands.

Overnight: Oddballs' Camp [View iBrochure](#)

Includes: Meals, local drinks, activities, laundry and park fees

Excludes: Premium drinks

Activities: Bush walks and mokoro excursions (July-September & depending on water levels)

Situated in the south-western Okavango Delta, Oddballs Camp is one of the original camping sites in the Okavango Delta. The camp is accessible by a 25-minute light aircraft flight from Maun. Oddballs camp is an affordable delta experience that suits the adventurous traveller or those just wishing to get away from it all.

Oddballs Camp accommodation consists of large walk-in tents erected on raised wooden platforms, overlooking the floodplains and bush. All tents have rustic, en-suite bathrooms with canvas walls, open air with bucket showers flush toilets.

The central dining area directly overlooks the Boro River, providing excellent game viewing for guests. There is also a comfortable lounging area and a raised viewing platform with plenty of private and communal areas to relax and enjoy this beautiful area - barefoot, relaxed and informal.

Days are spent in a relaxing manner with guests exploring the area by foot and mokoro - the traditional dug-out canoe. These excursions are conducted along the Boro River, one of the main channels of the Okavango Delta, and surrounding floodplains – water levels varying with the time of year. You enjoy guided walks on Chief's Island in the beautiful Moremi Game Reserve, with a local professional guide who has grown up in the area and has an expert knowledge of the flora, fauna and culture of the delta region. The atmosphere is tranquil and undisturbed by engines thus offering a pure experience of the wilderness.

An exciting further option from Oddballs Camp is to camp 'wild' out in the delta on a mokoro trail (pre-bookings required and water level dependent) accompanied by your poler/guide. There is a provisions' and camping equipment store at Oddballs and when you undertake a mokoro camping trail your food will be provided but you will be responsible for its preparation.

Airstrip Transfer Time: 5 minutes



Day 3

Sedia Hotel, Maun

Day Itinerary

Following breakfast and a possible morning activity (flight time permitting) you will transfer by light aircraft to Maun Airport for your onwards road transfer to Sedia Hotel where you are going to spend one night on a bed and breakfast basis before your safari departure the following morning.

***Please note you will need to purchase beverages for the mobile camping safari starting the following day on your day of arrival back in Maun before departure on safari early the next morning.



Situated along the banks of the Thamalakane River, in the North-West District of Botswana, Maun, a term that derives its name from the San language, meaning "the place of reeds," serves as the administrative town center of Ngamiland. Maun is notoriously known as a "Frontier" town, and is referred to as the 'gateway' to the Okavango Delta and Moremi Game Reserve as most tourists enter these destinations through this buzzing town.

Although classified as one of the fastest growing towns in Botswana, and boasting one of the busiest airports in Southern Africa, Maun still retains much of its old/traditional (village-like) character, which encompasses the old judicial court of chiefs who are still active. Reed and mud hut infrastructures are seen in and around town as well as donkeys/carts and livestock. However, numerous hotels, lodges, bed and breakfasts, shopping malls, post offices, a museum and a big hospital are available too. Maun also serves as the headquarters for the safari industry, tour operators and air charter companies that offer trips into the Okavango Delta and National Parks such as Moremi Game Reserve, Khwai, Savute, Makgadikgadi, Chobe, Nxai Pan to name a few, as well as monumental historical sites like the Tsodilo Hills. Opportunities to visit nearby cultural villages can also be arranged from this central point.

Overnight: Sedia Hotel

Includes: bed, breakfast and Intermittent WiFi

Excludes: all meals not specified, drinks and activities

Activities: Various activities in and around Maun & Moremi can be arranged on request and at an additional cost

The Sedia Riverside Hotel is situated in Maun, Botswana on the banks of the Thamalakane River.

The Hotel offers a variety of accommodation ranging from hotel rooms, chalets and camping grounds. The guest rooms are all en-suite and have been cheerfully decorated with an individualistic African theme, each with its own private verandah overlooking the lawns. The rooms are air-conditioned and provide satellite television.

The restaurant has a decked terrace area adjacent to the large swimming pool and poolside deck area where guests can enjoy buffet style or à la carte meals.

Guests can also set up camp in the spacious campgrounds overlooking the Thamalakane River.

Airport transfer time: 10 minutes



Day 4-6

Bushways Buffalo Mobile Safari, Moremi Game Reserve

Day Itinerary

After breakfast and at a pre-appointed time (approximately 07h30) you will be met by your guide and join up with the mobile camping safari group.

You will embark on a journey to Moremi Game Reserve, renowned for its rich wildlife and birdlife encompassing both swamp and dry landscapes. During a short break en-route, your guide will give you a full overview of your safari and a safety briefing.

For the next three days, you will embark on a quest to discover the diverse wildlife and bird species that this region is famous for, while soaking in the stunning sounds and sights around you. You will spend three nights exploring Moremi Game Reserve, staying at two different campsites. Early morning game drives at sunrise and late afternoon drives at sunset will be the routine.

Camping will take place in private designated campsites equipped with bush ablutions. (B,L,D)

Distance: Maun to Moremi: 150 km, approx. 6-7 hours



The Moremi Game Reserve is all about searching for big game; where the habitats are as diverse as the wildlife itself. Water-adapted antelopes and wary-eyed buffaloes spill out into floodplains, behind towering woodlands where leopards hide on the high branches. Dead trees cast silhouettes over elephant-filled savannas a stone's throw from papyrus-fringed channels stretching out to the delta beyond.

When you arrive in the Moremi Game Reserve, it's anyone's guess what you'll find lurking in the long grass. From wild dogs stalking waterbucks to long sunsets by a hippo-filled lagoon, the scenes will live on in memory long after the journey home.

Kick up sharp smelling clouds of dust on a morning drive, disturbing pockets of warm air in the reeds as you splash through water crossings in pursuit of a distant lion's call. Pause by the edge of large lagoons, squinting to catch mischief making hyenas as they emerge from the trees to drink.

When you get sick of game drives, discover the channels by boat while Squacco herons fly alongside you into the wind. Watch a lazy sunset with the blue-cheeked bee eaters before returning to dry land for more hardcore bush exploration.

As Moremi Game Reserve is bound by national park rules, activities here are limited to game drives during hours of daylight with no off-roading, and boat cruises on the permanent channels.

While most of the reserve is open to the public, two private lodges sit in the Mombo Concession to the north of Chief's Island, surrounded by the waters of the Okavango Delta. Boating isn't possible here, instead the area offers the ultimate in dry-land game viewing. Hailed as Botswana's predator capital, this exclusive corner is closed to outsiders and home to the big five, where the invitee list fills up years in advance.

Bushways Buffalo Mobile Safari

Includes:

Camping equipment and accommodation (spacious bow tents with foam mattresses), rooms at a comfortable lodge in Victoria Falls, all transfers and activities as per the itinerary, all meals that are indicated and filtered drinking water, tea/coffees, services of a Professional Guide and Camp Assistant, all Botswana park fees for activities included on itinerary and transport in specialised safari vehicles. Okavango Air Rescue.

Excludes:

Restaurant meals (Victoria Falls, Zimbabwe), entrance to the Falls, visas, airport transfers, gratuities, curios, souvenirs, optional excursions (scenic flight over the Delta and activities in Victoria Falls), beverages (alcoholic, non-alcoholic and soft drinks), insurance to cover for cancellation and curtailment, medical, baggage, emergency evacuation, sleeping bag (and small pillow) on all camping sectors, any increase in National Park Fees.

Accommodation:

Tents are 2.1m x 2.1m x 1.75m dome tents with 5cm high density foam mattress. A sleeping bag and Pillow are not included, but may be rented for an additional fee. Where applicable, comfortable lodge accommodation will be utilised.

Ablutions:

Ablutions are shared. There is a separate shower cubicle and toilet cubicle with bush toilet (long drop*). Both are enclosed by canvas for privacy and protection from wildlife.

Transportation:

Transport is in a custom made 12-seater 4x4 safari vehicle. A trailer is towed with all the camping necessities needed for your guide and assistant to set up camp and attend to all chores. Please note that mobile safaris that have road transfers between camps - the vehicle is open and windy with some transfers taking 7-8 hours depending on the routing.

Group Size: Maximum 12

What to expect on Safari

A full day in camp usually starts at sunrise around the campfire for that first 'essential' cup of tea or coffee and a light breakfast of cereal, toast, fruit and rusks. You then head out as early as is permitted to be the first on the roads to track fresh spoor left from the animal's overnight activities – you may spot fresh lion tracks walking straight past the camp or evidence of a passing herd of buffalo not far away.

Generally on the morning game drive you stop for tea and head back to camp by late morning. In camp you may enjoy a lunch or brunch, depending on the time, and then there is plenty of time for showers and that great safari tradition 'siesta time'. You meet together for afternoon tea and then head out on the afternoon activity, perhaps seeking a new area or returning to a great morning sighting.

Moving days follow a different pattern. Your guide combines his knowledge of the wildlife, safety and road and weather conditions when planning transfers. Departure times are always communicated in advance.

Where your itinerary includes moving days, these will follow a different pattern. Check details of your itinerary as some camps are based on one location for the duration.

Overnight: Bushways Buffalo Mobile Safari Moremi**Day 7****Bushways Buffalo Classic Mobile Safari, Savuti - Chobe National Park****Day Itinerary**

Chobe National Park, with its varied and striking landscapes, will be your next destination. As you continue your search for wildlife, you will traverse the drier region of Savute where bull elephants dot the plains. The

Savute region is known for its dynamic ecosystem, which can undergo significant changes over time. The presence of waterholes and marshes can attract a diverse range of animals, making each game drive a thrilling and unpredictable adventure. Camping will be in private designated areas with bush ablutions. (B,L,D)

Distance: Moremi to Savute: 120 km, approx. 7-8 hours



When it comes to Botswana, Savute breaks all the rules: both for animal behaviour and for habitats. Here, lions hunt elephants, leopards take to fishing, the grasslands are vast and open and rocky hills punctuate the flat terrain.

Savute has proved itself somewhat of an enigma over the decades. During years of abundance its marsh fills with water, fed by the Savute Channel. The water weaves its way here from Angola via a chain of rivers and lagoons, spilling out into the marsh and drawing huge herds of elephants, wildebeest, zebras and buffalos.

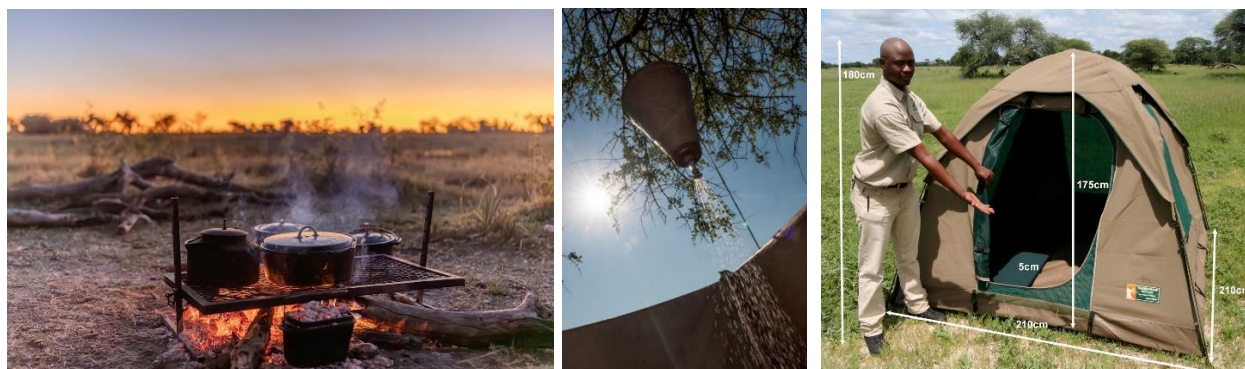
In drier years, the channel shrinks into small pools and can evaporate completely, leaving the marsh dry and sending wildlife to the waterholes for water, where the tension between plains game and predators heats up over a parched and dusty landscape.

Wherever the plains game goes in Savute, the predators follow close-by, learning tricks of survival to adapt to the marsh's ever changing nature. Whether the water flows here or not is anyone's guess. The channel and marsh have a life of their own, independent both of the seasons and the annual rainfall.

Savute doesn't just offer a safari; it's also a feast for the eyes. Whitewashed skeletal trees set against green grass and huge blue skies, blinding red sunsets that spill purple and orange across the bush, and endless horizons that fade into a hazy mirage with the heat.

As Savute is part of Chobe National Park, a safari here is limited to game drives only. With the diversity of habitats, wildlife and landscapes that the marsh has to offer however, you will still find yourself wishing you had more time to see it all.

Overnight: Bushways Buffalo Mobile Safari Savute



Day 8-9

Bushways Buffalo Classic Mobile Safari Chobe Floodplains, Chobe National Park

Day Itinerary

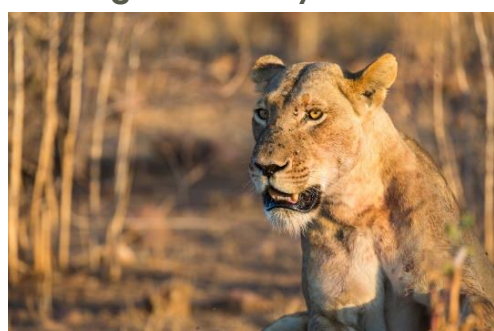
Today you head north towards the Chobe River where your game drives will meander along the riverbanks, guided by the call of the majestic African Fish Eagle. Experience a diverse array of wildlife, alongside breathtaking birdlife in this extraordinary river ecosystem. Enjoy game drives as you explore Northern Chobe National Park and its floodplains. (B, L, D)

Distance: Savute to Chobe River: 170 km, approx. 5-6 hours



The Chobe River Front is a remarkable wildlife area due to the permanent water source of the Chobe River. However its accessibility from Kasane and neighbouring towns of Victoria Falls and Livingstone has created quite a busy tourist area with larger hotels and lodges than you find in the more remote Okavango Delta. The spectacle of all the animals coming to drink and frolic at the water's edge is one to behold, particularly in the dry season (May - Oct) where water is scarce away from the river. It is an area famous for its abundance of elephants, a variety of predators and, in addition, you are likely to see herds of buffalo and possibly even roan and sable antelope. In the rainy season (Nov - Apr) the game is much less concentrated at the river as the wildlife spread throughout the greater area of Chobe National Park due to availability of surface water from nearby pans. This assists the vegetation on the river banks in recovering from the massive herds that are attracted to the area in the dry months. The summer rains bring beautiful wild flowers, exquisite scenery, impressive bird life and an abundance of young animals usually born around November/December. The spectacular Chobe sunsets alone are worth a visit to the area. Please note that activities are restricted within the national park in accordance with government rules and regulations: these include no driving off-road, no walking and no driving after dark.

Overnight: Bushways Buffalo Classic Mobile Safari Chobe



Day 10

Bushways Buffalo Mobile Safari, Victoria Falls (Zimbabwe)

Day Itinerary

Following a brief morning game drive, your guide will escort you to the Kazungula border, where you will meet your transfer vehicle to your lodge in Victoria Falls, Zimbabwe (please let us know your nationality and will advise of visa fees).

This is where your time with the team will come to an end as you will be looked after by the Zimbabwean team.

You will spend the night at a comfortable lodge. In the afternoons, you will have the opportunity to witness the thundering Victoria Falls and shop for souvenirs. (B)

Distance: Chobe to Victoria Falls: 100 km, Travel Time: approx. 3 hours (plus border crossing)

Activity not included in the package- this is for your own account. Lunch and Dinner will be at your own expense at the lodge.

Additional nights can be added in Victoria falls, activities can be prebooked in advance, please speak to your consultant.



At Victoria Falls, the earth splits open and swallows one of Africa's greatest rivers, the mighty Zambezi, creating the largest sheet of falling water on earth. As the water hits the narrow depths of the Batoka Gorge beneath, it blasts a cloud of mist skywards, lending the falls their local name 'mosi-oa-tunya' (the smoke that thunders). When the Zambezi is its fullest, the mist hangs a permanent raincloud above the falls, showering visitors on even the sunniest of days and visible for miles around.

Above the falls on the upper Zambezi, boats cruise the tranquil water at sunset while the distant spray catches the fading light downstream. Below the falls, the Batoka Gorge's rocky walls funnel the lower Zambezi into a chain of world-class rapids, prime for white water rafting.

Aside from being a UNESCO world heritage site and a natural world wonder, Victoria Falls also forms a natural border between Zimbabwe and Zambia. The falls can be seen from both countries, and for the most part the same activities are offered on both sides, from helicopter scenic flights to village visits and souvenir shopping.

Whether your idea of getting away from it all is a relaxed high tea in colonial grandeur or a heart-stopping bungee jump off a bridge, Victoria Falls keeps both the faint of heart and the most insatiable of adrenalin junkies busy for days.

From Zambia, a side on view of the falls is on offer with views into the Batoka Gorge, as well as the possibility of perching yourself at the edge of the falls on the vertigo-inducing Livingstone Island.

From Zimbabwe, you'll get a full-frontal view of three quarters of the falls' 1.7km wide curtain of water from viewpoints and footpaths meandering through a rainforest kept hot and humid by the spray of the falls.

Overnight: Bushways Buffalo Mobile Safari Victoria Falls

Pioneers Victoria Falls (or similar) [View iBrochure](#)

Pioneers Victoria Falls is situated in the quiet suburbs of Victoria Falls' residential area, 3.5 kilometres from the Falls.

Pioneers offers 50 elegant en-suite rooms all designed to embrace the Zimbabwean Pioneer era, with private verandas overlooking the garden and pool. All rooms at Pioneers are air conditioned and have free limited WiFi. The lodge has four family rooms making it ideal for families.

At the heart of the lodge is a snug lounge, an indoor and outdoor dining area, curio shop, as well as a terrace opening onto the pool and garden area.



Day 11 End of Itinerary

Day Itinerary

The safari officially ends after breakfast on Day 11, at the lodge. (B)

Please discuss onwards tour arrangements with your consultant - we are happy to arrange activities and transfers at additional costs.

Activities in Victoria Falls include White Water Rafting down the Zambezi Gorge, Canoeing on the upper Zambezi and Helicopter Flights over the Victoria Falls.

PLEASE NOTE that an additional night or two in Victoria falls can be arranged at time of booking including an array of activities that are on offer in Victoria falls – time permitting. Please discuss with your consultant.

Travel Information

Please take note of our Booking Terms & Conditions. It will be understood that these have been read and accepted by you on receipt of confirmation of the booking.

- For your safety and peace of mind, on confirmation of your booking, we strongly recommend that Travel Insurance is arranged to cover cancellation, curtailment, emergency evacuation, medical and repatriation expenses, damage/theft/loss of personal luggage, money and goods.
- Road and air transfers and activities are quoted on a seat basis (shared) unless otherwise requested or

specified. Passengers may have various stops en-route to a destination. The transfer or charter company reserves the right to specify departure and arrival times. Private charters and airport assistance from arrival to departure can be requested at an additional cost.

- Passengers exceeding 100kg are kindly asked to notify us at the time of booking as a surcharge may be applicable on internal flights due to smaller aircraft having strict weight limits in compliance with industry safety regulations.
- The costs are subject to change at any time due to fluctuations in fuel costs, taxes, levies, government regulations, rate of exchange and factors that are imposed upon us by our suppliers that are beyond our control.
- Please advise us of the ages of children (under 18) travelling, together with their date of birth, at the time of booking as not all lodges accept children and there may be restrictions or conditions which can affect pricing.
- We recommend that optional activities be booked in advance at time of confirmation to guarantee availability e.g Dinner cruises in Victoria Falls
- Please allow a minimum 2-3 hours connection time in Johannesburg for international flights. It is important that you check that your flight tickets have been issued in your full names as per your passport. Ensure that your luggage is checked through to your final destination to avoid the need to collect and recheck it during transit, such as at OR Tambo International Airport
- We require full payment for international and domestic scheduled flights at the time of confirmation e.g Airlink JNB/MUB, Proflight LIV/LUN within Zambia. We are not able to guarantee any flights before receipt of payment as seats are often held for a limited period before ticketing is required so this is a time sensitive issue. Air tickets are considered non refundable unless otherwise specified. Please confirm the details with your consultant at the time of booking.

Passports, Visas and Travel Documentation

Your passport must have at least 6 months validity before the expiry date and 6 empty pages (not including the endorsement pages). The onus is upon the guests to ensure that passports and visas are valid for the countries visited. Please note that certain visas can take up to 3 months to be processed so please consider this when booking.

If you are travelling with children through Southern Africa, please be aware that you will be required to have certified copies of their unabridged birth certificates, and passports on hand. If you are not their legal parents, or if only one of you is travelling – you will need to have consent in the form of an affidavit giving you permission to travel with the child.

Inter-camp transfers

Due to the remote locations of the areas in Southern Africa - your itinerary may include road, boat, helicopter and air transfers in small aircraft.

On shared air transfers, all the flight times between lodges are arranged a few days before the flights take place to avoid endless schedule changes. The lodge or camp where you are staying will be advised of your departure time the day before travel and will ensure that you are at the airstrip on time. Although every effort will be made to ensure that guests are transferred together in one vehicle / aircraft, this cannot be guaranteed, especially with larger groups. The aircraft used for inter-camp transfers vary in size from 3-, 5-, 7- and 12-seater aircraft. We recommend that guests susceptible to motion sickness take appropriate precautions due to flying conditions.

Weight & Luggage Restrictions

There are strict luggage restrictions in place on any itinerary, which includes light aircraft transfers for safety reasons. Luggage, including camera equipment and hand luggage, is restricted to 20 kg per person travelling on seat rates. Only soft bags will be accepted - no hard suitcases or bags with rigid frames can be transported, as they physically cannot fit into the aircraft.

The maximum dimensions of the soft bags that can be accommodated are as follows: 25cm/10 inches wide x 30cm/11 inches high and 62cm/24 inches long. Please keep in mind that the baggage compartments on the light aircraft are only 25cm high, so the pilots must have the ability to manipulate the bag into the compartment. Note that laundry can be done on a daily basis at most camps and lodges and they also offer amenities (shower gel/shampoo).

Should you arrive with excess baggage without prior warning, your baggage could be delayed, as we may have to fly the baggage into camp at a later stage at considerable extra cost to you. However, should you notify us in advance that your baggage will exceed the limit; we may be able to assist you with alternative arrangements e.g. storage or purchase of additional luggage allowance.

For bookings including flights within Zambia & Mozambique, please note luggage weight exceptions under destination information.

Lost Luggage

Lost luggage on international flights is a common problem facing travellers today. We suggest that you pack a small bag with your essentials, including any life sustaining medication, which can be carried with you as hand luggage. If travelling as a couple or family we suggest that you split your clothing between bags so that if one bag gets lost, you will have basic items on hand to see you through the first couple of days while we try and recover your lost baggage.

Please note that whilst we try our utmost to locate and re-unite you with your bags, that there may be charges involved in getting your bags to remote areas, which would be for your cost. Please remember to report the lost luggage to the airline as soon as you make the discovery - the airline will issue you with a Baggage Claim Form, which you will need in order for us to trace the bag.

Health and Dietary

Please note that you are travelling to a Malaria-risk area. Please consult your doctor for medical advice prior to travel.

Although usually safe to drink, we do not recommend that you drink the tap water. Filtered water is available at the camps and lodges.

The camps are remote, with limited power supply and access to resources, so it is very important to notify us in advance of any special dietary requirements, medical conditions and medical equipment you may need with you. Please carry critical medication in your hand luggage.

Yellow Fever Certificates - are only required if you have travelled to a Yellow Fever area as designated by the World Health Organisation. Please check with your Travel Clinic or doctor well in advance of your departure date.

General Travel Information

- Safari Camps and lodges offer limited electricity usually generated by solar or generator in order to make provision for charging cameras and electronic devices.
- Please ensure that you do not pack any valuables, cameras, cash, laptops travel documents and medication in your checked in luggage – these should be kept on your person at all times.
- Please notify us immediately of any changes to flight arrival and departure details as this affects onward transfer arrangements.
- Please note that most camps & lodges in Botswana do not have double beds. Twin beds are pushed together to make up a double room.
- Although every effort is made to adhere to schedules the company reserves the right and in fact is obliged to occasionally change routes and camps on safaris as dictated by changing conditions or unforeseen circumstances.
- By confirmation of the booking, you acknowledge that you have been made aware and accept that the

tour carries inherent risks, and that you voluntarily assume all risks which are associated with the tour. You will be required to sign indemnities at the various camps, lodges and service providers, and abide by their operators' code of conduct in order to ensure your safety.

- If you have any cause for complaint while travelling, you should immediately bring it to the attention of the camp manager and / or our Maun office that will attempt to resolve the situation immediately.
- Do not remove any animal artefacts, flora or fauna from any of the areas you visit, as there are strict international regulations on the export of such items.



Visa

Some visitors need to apply for visas before arrival please check with your Embassy.

For more information on visas please visit the following address:

Botswana Government - Visa Requirements

BORDER CROSSINGS

Currency

The currency of Botswana is the Pula (BWP). US\$ Dollar notes (2007 Series onwards), and Visa and MasterCard are accepted.

Internal Flights and Transfers

Due to the remote areas the camps and lodges are based in, transfers between camps may take place by boat, mokoro, game drive vehicle or light aircraft.

Flight times around Botswana | Approximate flying times

Flight duration times (as listed below), are to be used as an average guideline. They are based on actual flying time, and passengers may have various stops en-route to a destination affecting the total travel time. Your pilot will brief you of your flight route and duration during the safety briefing.

Maun - Delta: 15 to 30 minutes

Delta – Delta: 10 to 20 minutes

Delta - Linyanti: 30 to 40 minutes

Maun – Linyanti: 50 to 60 minutes

Linyanti - Kasane: 40 to 60 minutes

Maun/Delta - Kasane: 60 to 80 minutes

Maun - Makgadikgadi/Desert: 40 to 60 minutes

Departure Taxes

Departure taxes are included in ticket prices.

Weight & Luggage Restrictions

See Booking Information



Currency

From June 2019 the Zimbabwean Dollar (Z\$) was reinstated as the official currency of Zimbabwe. However, for tourism purposes, cash in US Dollars is generally the accepted currency. US\$ Dollar notes (2007 Series onwards), and Visa and MasterCard are accepted. Always have enough US\$ cash available in smaller denominations in the event where ATM's and Credit Card facilities are not operational.

Visa

Fees for Visitors to Zimbabwe who are eligible to receive their visa on entry

Europe and USA: US\$ 30.00 for single entry/ US\$ 45.00 for double entry.

UK & Ireland: US\$ 55.00 for single entry/ US\$ 70.00 for double entry.

Canada: US\$ 75.00 for single entry/ double entry to be obtained from local embassy prior to travel

Some visitors need to apply for visas before arrival - please check with your Embassy, Zimbabwe Government Visa Requirements. ALWAYS have cash available in the correct US\$ amount at ALL ports of entry.

All travelers entering Zimbabwe are required to complete the Zimbabwe arrival form online the day before arrival. Please click on this link to fill in the form: <https://evisa.gov.zw/app/index.html#/standby-kiosk>

Useful Links: <https://africaseden.travel/tourist-visa-info/>

Internal Flights and Transfers

Due to the remote areas the camps and lodges are based in, transfers between camps may take place by boat, train, game drive vehicle or light aircraft.

Road transfers to and from Hwange Safari Lodge/ Hwange Main Camp have scheduled departure times, any transfer outside these times will attract a surcharge.

Departure Taxes

International departure taxes are included in the scheduled flight rates. However light aircraft transfers from Victoria Falls Airport to Livingstone or Kasane require an International Departure tax of US\$35 per person & AIDF Levy of US\$15 = US\$50 per person to be paid in cash.

Domestic departure taxes are payable in cash at the airport, for any flights departing internally from any registered, manned airport. These include Harare, Bulawayo, Kariba, Hwange and Victoria Falls Airport. The amount is US\$10 departure tax + US\$5 AIDF Levy = US\$15 per person. We recommend small denominations for easier and quicker transactions as change is not always available. Traveller's cheques and credit cards are NOT accepted.

Weight & Luggage Restrictions

See Booking Information

